



ABOUT US

The company was established by bringing together the backgrounds and abilities of individuals who were experts in their respective building and construction fields. Taj Builders is expanding quickly in the building sector. Taj Builders has concentrated on building industrial structures since its founding. We have successfully completed several large-scale projects and have gained a reputation for delivering high-quality work on time and within budget. The company's commitment to excellence and customer satisfaction has been key to our growth and success in the industry.

We determined that innovation and a steadfast commitment to quality and client satisfaction would serve as our cornerstones. We still approach commercial, residential, and industrial projects with the same zeal and expertise after nearly three decades. We work on government, private, and semi-private projects. Our diverse portfolio showcases our ability to adapt to various project types and client needs, further solidifying our reputation as a reliable and versatile construction company. Our dedication to staying ahead of industry trends and implementing cutting-edge technologies sets us apart from our competitors.

We refer to our clients as 'esteemed partners in their business' in addition to overseeing construction projects. We have outperformed our rivals because of our philosophy of combining knowledge, quality, and customer satisfaction. This remarkable growth was largely due to practical policies, polite behavior, and quality consciousness. The management does everything in its power to guarantee client satisfaction.

Taj Builders is dedicated to enhancing its current performance. We contribute our varied experience in building and road construction, along with our successful track record, to the organization. We have successfully finished numerous intricate projects in incredibly challenging circumstances.

COMMITMENT TO CLIENTS

Our commitment to clients is unwavering, as we strive to exceed expectations and deliver exceptional service. We prioritize open communication, transparency, and building long-lasting relationships based on trust and mutual respect.

Please share your objectives, vision, timeline, and budget with us so that we can assess the feasibility of your project and offer you the most economical and effective design and construction options. We understand the importance of collaboration and will work closely with you every step of the way to ensure your vision is brought to life. Our team of experienced professionals is dedicated to providing innovative solutions tailored to meet your specific needs.

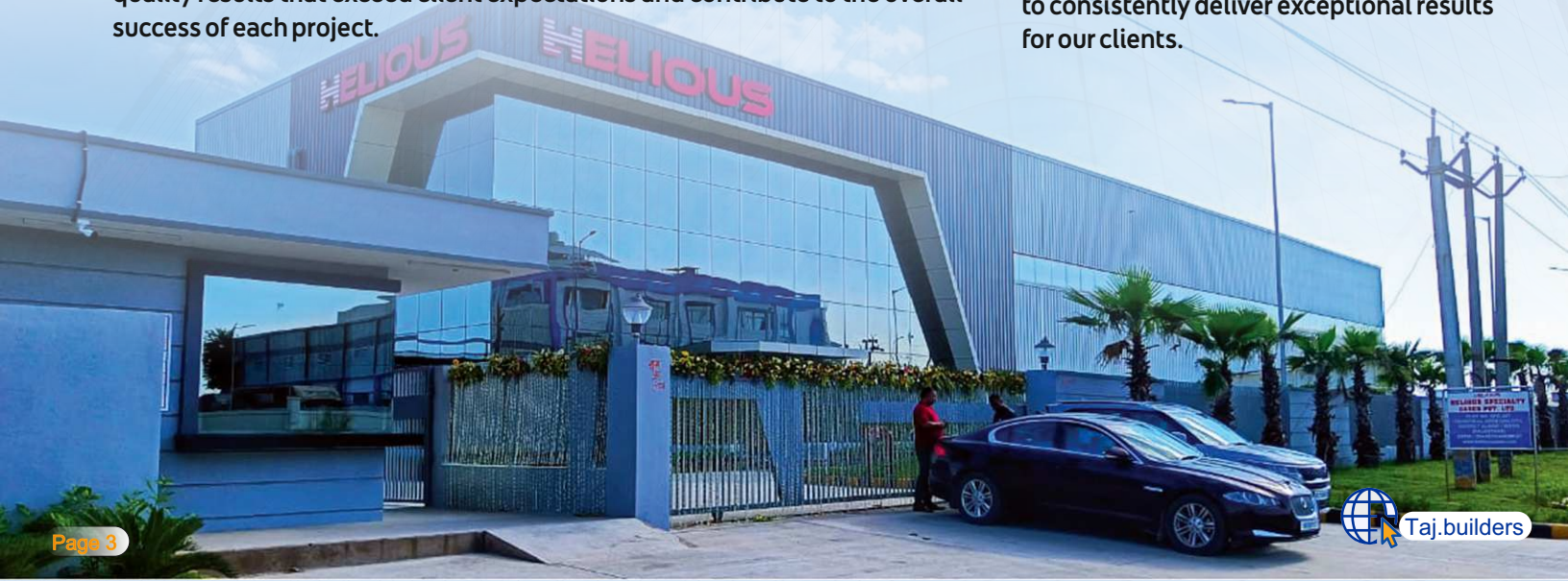
We will help you deliver a high-quality solution on time and within budget, starting with preliminary feasibility studies and continuing through planning and development, project design, and the tender stage. Taj Builders takes pride in paying attention to the client's goals and project objectives in order to suggest the best course of action for construction and offer solution-focused support. We take pleasure in collaborating directly with large government agencies, contractors, owner clients, and other engineering and architectural firms.

Our 24 years of combined experience across the Indian subcontinent attests to the real value Taj Builders brings to the project design and construction team. Innovative designs that leverage proven technologies are reliably delivered on schedule, within budget, and in a safe manner. Our team's expertise in project management ensures efficient coordination and communication throughout the construction process, resulting in successful project completion. Taj Builders is committed to delivering high-quality results that exceed client expectations and contribute to the overall success of each project.

HUMAN RESOURCE

Any organization's strength is determined by the knowledge and experience of its human resources, and Taj Builders is no different. Because of the human resources we have developed via our work experience, we are ahead of the competition. In addition to offering quality, added value, and timely performance, we are committed to completing our clients' projects with the utmost sincerity. To stay on the cutting edge of market trends and best practices, our staff at Taj Builders is dedicated to lifelong learning and professional growth.

We are able to provide our clients with outstanding outcomes and uphold our standing as a reliable partner in the construction sector by investing in our staff. By continuously improving our skills and knowledge, we ensure that our clients receive the highest level of service and expertise. Our commitment to excellence sets us apart in the industry and allows us to consistently deliver exceptional results for our clients.



DESIGN & QUALITY

Taj Builders claims that focused design-build self-performs to your specifications while managing the complete design and construction process. Owners can finish projects using the design-build method with the least amount of disruption to their main business operations and the least amount of internal resource usage. The owner purchases comprehensive design and construction in a single payment using scope definition. In order to achieve this, engineering and architectural services are combined under a single construction contract. Design-build offers the quickest schedule and the lowest cost because of their superior ability to manage the risk involved in the contract's construction phase. This streamlined approach allows for more efficient communication and problem-solving, resulting in a smoother project delivery.

Additionally, the design-build method often leads to higher quality outcomes due to the close collaboration between the design and construction teams. An increasing number of both public and private owners are selecting alternative project delivery methods in an attempt to speed up the design and construction process. We have taken an active part in Design-Build teams for a number of projects, some of which included financing and extended warranty components. Because of our established relationships with many respectable engineering and design firms, we can quickly assemble a full team to handle the specific requirements of a project. Every product that Taj Builders produces is of a caliber that satisfies global standards. Our reputation is built on stability and trust, and we consistently bring a high level of quality and integrity to every project we work on. The high quality of our projects is reflected in their comfort, durability, beauty and aesthetics, safety and security, luxury, and style.

Our commitment to excellence is evident in every detail of our work, from the initial design phase to the final finishing touches. With Taj Builders, clients can expect nothing less than exceptional results that exceed expectations. Every Taj Builders project is supported by the endearing assurance and hard work of a dedicated, seasoned company to meet and exceed every need. As part of our efforts to provide our clients with the best construction services possible, we are constantly improving our internal operational systems of quality checks. Every structure or complex we have constructed exemplifies state-of-the-art contemporary architecture. These include excellent planning and well-equipped recreational facilities.

Every project we take on demonstrates our dedication to quality, guaranteeing that every structure is not only aesthetically beautiful but also long-lasting and useful. With Taj Builders, you can be sure that the best possible craftsmanship and quality will be used to realize your vision. Taj Builders's quality standards are unparalleled in the industry, establishing a new benchmark for excellence in construction. We are a reliable partner for all of your building needs because of our commitment to producing excellent results in every aspect of our work. Our team of experienced professionals is dedicated to ensuring that every detail of your project is executed with precision and care. Trust Taj Builders to bring your vision to life with unmatched expertise and craftsmanship.



OUR VISION

Building Future & Establishing a landmark in Construction Industry through consistent implementation of Safe, Advanced & Eco-Friendly Construction practices to deliver time bound projects. Our need and endeavor at TAJ BUILDERS. revolve around just one entity – our customers.

OUR MISSION

Our mission is to be competent with high-quality work, commitment and on-time delivery of the projects, which is being as the prime motto towards various sectors like Industrial, Design & Engineering, Project Management & Monitoring, Residential & Commercial, and Educational Institutions etc.

OUR WORK PROCESS

INITIAL MEETING

Initial consultation to understand the client's work concept. We share ideas. After we receive the client's concept, we start working on the project. and we'll start collecting crucial information, such as an earlier plan or a site survey. This helps us ensure that we are aligned with the client's vision and goals for the project. Once we have all the necessary information, we can begin developing a detailed plan to bring the concept to life.

MAKE PROPOSAL AND CONCEPT DESIGN OPTION FOR PROJECT

Based on our thoughts and the client's viewpoint, we develop project proposal options for the next meeting. As soon as the parameters of the project are determined, we will begin developing concepts. These will depend on your specific needs, the project's scope, and the budget. We aim to present you with a range of creative solutions that align with your goals and expectations. Our team is dedicated to delivering a proposal that not only meets but exceeds your requirements.

DEVELOPING DESIGN

Concept design is essentially a range of methods for approaching the brief. We developed through the use of drawings, floor plans, perspective sketches, and computer renderings. These tools help us visualize the overall look and feel of a space before construction begins, allowing for adjustments and improvements to be made early on in the design process. This ensures that the final product meets the client's needs and expectations.

SUBMITTING DETAILED DESIGN AND COST BREAK DOWN

Once resource consent has been approved, your project will proceed to the detailed design phase. This suggests that we will create your design to the level of detail that allows a building contractor to assess the project's overall scope. This will cover the materials, systems, components, finishes, and the specifics of the construction. The detailed design phase will also include creating construction drawings and specifications that outline all the necessary requirements for the project. These documents will serve as a guide for the building contractor to accurately carry out the construction process.

GENERAL Construction

Taj Builders is a trusted name in the construction industry, offering comprehensive turnkey construction services that cover every stage of a project – from concept and design to execution and final delivery. With our head office located in Bhiwadi (NCR), we have been serving clients across industrial, commercial, and residential sectors with dedication, transparency, and a commitment to quality.

At Taj Builders, we believe in delivering end-to-end construction solutions that align perfectly with our clients' vision and budget. Our expert team of engineers, architects, project managers, and skilled workforce ensures every project is executed with precision, adhering to the highest standards of safety, quality, and sustainability.

We specialize in industrial buildings, commercial complexes, warehouses, residential structures, and infrastructure development, offering reliable project planning, cost management, and timely completion. Our turnkey approach eliminates the hassle for clients – we take full responsibility from initial design to the final handover.

Driven by innovation, modern technology, and a customer-first philosophy, Taj Builders has earned a strong reputation for reliability, quality workmanship, and integrity in every project we undertake. Whether it's a large industrial setup or a bespoke residential project, we ensure exceptional results that stand the test of time.

With a growing portfolio of successfully completed projects, Taj Builders continues to set benchmarks in the construction industry of Bhiwadi and the NCR region. Our mission is to build not just structures, but long-term relationships based on trust and excellence.

Our Core Services Include:

- Turnkey Project Execution
- Industrial & Commercial Construction
- Civil & Structural Work
- Interior & Exterior Development
- Project Management & Consultation

Why Choose Taj Builders:

- Experienced and qualified professionals
- Transparent project handling and cost control
- Commitment to timely delivery and quality standards
- Customized solutions for every client



PRE ENGINEERED BUILDINGS

India is a land of opportunity and industrial growth. Quality, speed, and cost are some of the factors that have led to pre-engineered buildings gaining market share. India has a long history of using pre-engineered buildings, but they still don't strike the right balance between economy, quality, speed, and ethics. There is a need for further innovation and development in the pre-engineered building sector to meet the growing demands of the market. With advancements in technology and construction practices, there is potential for pre-engineered buildings to become more sustainable and efficient in India.

Taj Builders wants to leave their mark in order to meet the expectations of the market. They acquire infrastructure and skilled personnel to achieve their objective of making their mark on all types of industrial construction. Taj Builders is aware that having the greatest workforce and infrastructure of any PEB company is essential to achieving perfection. To achieve both, they have partnered with the leading PEB brands in India to provide a comprehensive solution anywhere in the country.

Taj Builders' commitment to quality is demonstrated by their provision of first-rate infrastructure and highly qualified personnel. They guarantee that they can provide clients all over the country with outstanding quality and service by collaborating with top PEB brands in India. With Taj Builders, clients can trust that their industrial construction projects will be completed with the highest level of expertise and efficiency. Their dedication to excellence and strong partnerships ensure that they deliver top-notch results every time.

ELECTRICAL WORK

Taj Builders offers both construction and electrical services. All electrical work is done safely and in accordance with industry standards thanks to our team of skilled electricians. By putting safety first in our construction projects, we hope to give our clients and staff a safe place to work for residential, commercial, and industrial projects.

we offer electrical system design, installation, maintenance, and repairs. We pledge to follow all applicable safety regulations and provide top-notch workmanship. Our experienced team ensures that all electrical systems are installed efficiently and effectively to meet the specific needs of each project. Taj Builders is committed to delivering high-quality results while prioritizing the safety of our clients and employees.

We understand the importance of adhering to deadlines and budget constraints, ensuring that our clients receive exceptional service every step of the way. Our dedication to excellence and safety sets us apart as a trusted partner in the construction industry.



FIRE FIGHTING



Taj Builders is a leading construction company based in Bhiwadi (NCR), offering turnkey construction and fire fighting services. We specialize in delivering high-quality industrial, commercial, and residential projects with complete safety and reliability. Along with our core construction expertise, we provide comprehensive fire fighting system installation and maintenance services, ensuring every project meets modern safety standards. Our experienced team focuses on quality workmanship, timely delivery, and client satisfaction, making Taj Builders a trusted name in the construction and safety industry.



INTERIOR DESIGN

Taj Builders is a reputed construction company headquartered in Bhiwadi (NCR), offering a complete range of construction and commercial interior services. We provide end-to-end project solutions – from structural development to elegant interior finishing – ensuring quality, functionality, and modern design in every space we create.

With a team of skilled engineers, architects, and interior designers, Taj Builders specializes in developing industrial, commercial, and residential projects that reflect excellence and innovation. Our commercial interior services include space planning, design execution, and customized interior solutions that enhance the professional environment of offices, showrooms, and business spaces.

At Taj Builders, we are committed to delivering projects that combine strength, style, and sustainability – all while maintaining the highest standards of quality and client satisfaction.



SAFETY FIRST

At Taj Builders, the safety, health, and well-being of our employees, clients, subcontractors, and all stakeholders are of utmost importance. We are committed to maintaining the highest standards of occupational health and safety across all our construction and interior projects. Our goal is to achieve a zero-accident workplace by fostering a proactive safety culture and integrating health and safety practices into every stage of our operations.

Our Commitment

Taj Builders recognizes that construction activities involve potential risks and hazards. Therefore, we are dedicated to:

- Providing and maintaining a safe and healthy working environment.
- Ensuring that all employees are properly trained and aware of safety procedures.
- Complying with all applicable legal and statutory requirements related to health, safety, and the environment.
- Promoting a culture of continuous improvement in safety performance.

Responsibilities

Management is responsible for implementing the safety and health policy, providing necessary resources, and ensuring compliance.

Supervisors and Engineers must ensure that safety standards are enforced at all times on-site.

Employees and Workers are expected to follow all safety rules, report unsafe conditions, and actively participate in maintaining a safe working environment.

Key Objectives

Prevent Accidents and Injuries:

Implement preventive measures and safe work practices to eliminate workplace hazards and minimize risks.

Promote Health and Well-being:

Safeguard the physical and mental health of our employees by maintaining hygienic site conditions, ensuring proper sanitation, and providing access to first aid and emergency care.

Safety Training and Awareness:

Regular safety inductions, toolbox talks, and refresher training programs are conducted to ensure every worker understands their safety responsibilities and follows best practices.

Personal Protective Equipment (PPE):

Ensure that all workers are provided with, and correctly use, the appropriate PPE such as helmets, gloves, safety shoes, harnesses, and reflective jackets.

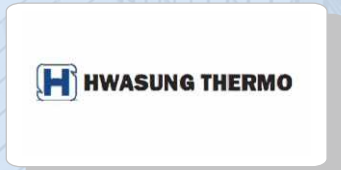
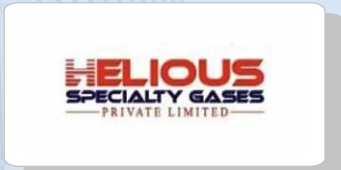
Emergency Preparedness:

Develop and maintain effective emergency response plans for fire, accidents, and other site emergencies, with regular drills and mock exercises.

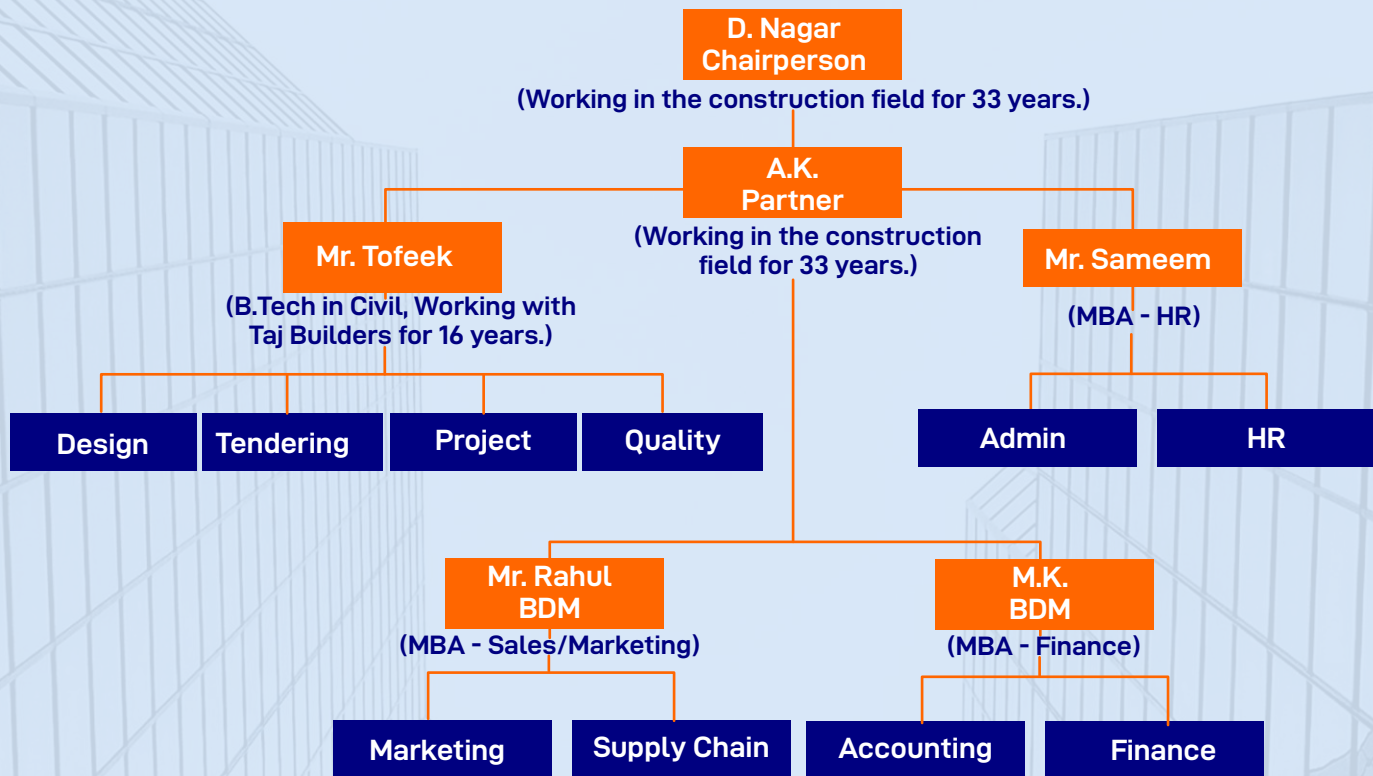
Monitoring and Evaluation:

Conduct routine inspections, audits, and reviews to identify hazards, assess risks, and implement corrective actions promptly.

CLIENTS



ORGANISATION CHART

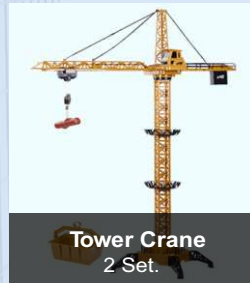


PROJECT MANAGEMENT SERVICES

- * Project Planning
- * Project Scheduling
- * Detailed Project Report's
- * Value Engineering
- * On Site / Off Site Management
- * Approvals from Various Bodies – from Start to Handing Over (Statutory Appraisals)
- * Vendor & Material Management
- * Tendering Cost Estimates, Bid Process, Agreements with Vendors (Vendor Registrations)
- * Quantity Survey, BOQ's, Rate Analysis, Material Specification
- * Quality Audit & Quality Check
- * Other Controls – Safety, Health, Environment
- * As Built Documentation, Cost Variance Analysis, Bills Certification, Close Out Report

MACHINERY TOOLS

We have been at the forefront of technological advancements in the construction industry with top-notch tools and machinery used for job completion because we are dedicated to giving our customers the best service possible.



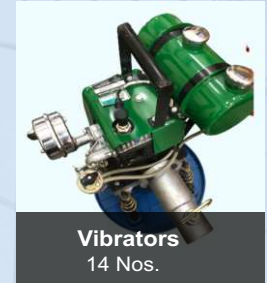
Tower Crane
2 Set.



Hopper Mixer Machine
4 Nos.



Mixer Without Hopper
6 Nos.



Vibrators
14 Nos.



Bricks Testing Machine
06 Nos.



Auto Level
11 Set.



Welding Machine
09 Set.



Cube Testing Machine
06 Nos.



Tractor Torilly Set
07 Set.



Steel Cutter Machine
06 Set.



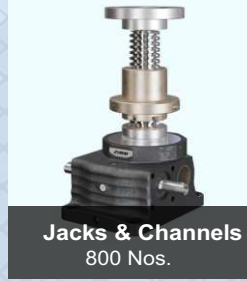
Steel Jacker Machine
16 Set.



Scaffolding
145000 Sft.



Mini Lift Machine
07 Set.



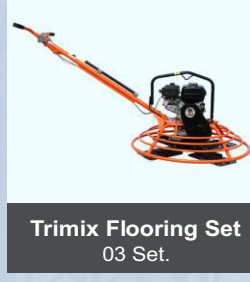
Jacks & Channels
800 Nos.



Ajax Fiori (4cum)
03 Nos.



Excavator (JCB 3Dx)
03 Nos.



Trimix Flooring Set
03 Set.



Vacuum Dewatering Pump-04 Nos.



Road Roller
04 Nos.



(Theodolite Toatal Station) 05 Set.

UNICARE FIRE SAFETY INDIA PVT. LTD.



LAVISH SURFACES PVT. LTD.



TRANS ACNR SOLUTION PVT LTD



SEMICON SPECIALITY GASES PVT. LTD.



HELIOUS SPECILIATY GASES PVT LTD



APEX



**PEE AAR AUTOMOTIVE
TECHNOLOGIES PVT LTD**





**SAI MAHIMA HOSPITALITY SERVICES PVT LTD
SHAHJAHANPUR**



BHANDARI OIL MILLS PVT LTD BHIWADI



LAVISH SURFACE GHILOTH



VIJAY HOTELS, SHAHJAHNPUR



SHREE NATH LIFE SCIENCE , SOTANALA



STAR CORE REFRIGERATION SHAHJAHANPUR





GARGI BIO TEK PVT LTD, PUNE MAHARASHTRA



SIEL POWER GEARS PVT LTD, BHIWADI



ALFA GYPSUM PVT LTD, BHIWADI



TRANS ACNR PVT LTD, SHAHAJAHANPUR



TEMPO COOKER PVT. LTD. KHATOLA



PHONIX ARC, (NEEMRANA)



THAPAR AGRO (KHUSHKHEDA)



BHANDARI OIL MILS PVT LTD, BHIWADI



SUNTECH PAPER INDIA LTD, BHIWADI



ASHOKA LIQUORS PVT LTD, NH-08, GURUGRAM

Project: NEOCALM INDIA PVT. LTD.

Location : Ghiloth, (Rajasthan)

Land Area : 20000 SQMT

Type of Work : Wharhouse

Project Cost : 9.50 Cr.

Contact Person : Mr. Ajay Chawla Ji

Status : Mid stage

Project: INNOVO INFRATECH PVT. LTD.

Location : Pathredi, Manesar (HR)

Land Area : 100000 SQMT

Type of Work : Plastic products

Project Cost : 7.50 Cr.

Contact Person : Mr. Mayur Jain / Raj Jain ji

Status : Starting Stage

Project: TRANS ACNR SOLUTION PVT LTD. UNIT -5

Location : Ghiloth, (Rajasthan)

Land Area : 7500 SQMT

Type of Work : Slip Cluches & Air Conditioner For Bus & Trucks

Project Cost : 4.50 Cr.

Contact Person : Mr. Prem Sharma Ji

Status : Starting Stage

Project: CARABAO FOODS PVT. LTD. (Frozen Industry)

Location : Nuh, Sohna (Haryana)

Land Area : 55000 SQMT

Type of Work : Frozen Foods

Project Cost : 13.72 Cr

Contact Person : Mr. Suboor Ahmad Ji

Status : Finishing Stage

Project: PEE AAR AUTOMOTIVE TECHNOLOGIES PVT. LTD.

Location : Ghiloth, (Rajasthan)

Land Area : 9100 SQMT

Type of Work : Automobile Parts (Maruti)

Project Cost : Stage4.50 Cr.

Contact Person : Mr. Sanjeev Dhawan Ji

Status : Mid Stage

Project: KRN HEAT EXCHANGER PVT. LTD.

Location : Kolila, Neemrana (RJ)

Land Area : 4000 SQMT

Type of Work : A/C Heat Exchanger

Project Cost : 1.80 Cr.

Contact Person : Mr. Bastiram yadav ji

Status : Mid

Project: MUNDHRA MASTRBACHES PVT. LTD.

Location : Kami, Sonipat (HR)

Land Area : 10000 SQMT

Type of Work : Masterbatches

Project Cost : 2.50 Cr.

Contact Person : Mr. Ram Sevak ji

Status : Starting Stage

Project: JUPITER ILLUMINATION PVT. LTD.

Location : Bhiwadi- (Rajasthan)

Land Area : 4000 SQMT

Type of Work : Led Lights

Project Cost : 1.50 Cr.

Contact Person : Mr. Ram Lal ji

Status : Starting Stage

Project: APEX INDUSTRIES PVT. LTD.

Location : Ghiloth, (Rajasthan)

Land Area : 4100 SQMT

Type of Work : Tools and Accessories

Project Cost : 2.50 Cr.

Contact Person : Mr. Manish Bhatnagar ji

Status : Completed

Project : GEMINI SPECIALITIES PVT. LTD.

Location : Ghiloth, (Rajasthan)

Land Area : 7500 SQMT

Type of Work : Polymers

Project Cost : 4.50 Cr.

Contact Person : Mr. Girish Narang ji

Status : Mid stage

Project : RSWM BHILWARA GROUP

Location : Ringus, Sikar (Rajasthan)

Land Area : 10000 SQMT

Type of Work : Spinning mills

Project Cost : 4.5 Cr.

Contact Person : Mr. Sanjay Sharma

Status : Completed

Project: SEMICON SPECIALITY GASES PVT. LTD. Unit-2

Location : Ghiloth, (Rajasthan)

Land Area : 10000 SQMT

Type of Work : Gases

Project Cost : 3.20 Cr.

Contact Person : Mr. Manish Bhatnagar ji

Status : Completed

Project: TRANS ACNR SOLUTION PVT. LTD. UNIT -1

Location : Shahjanpur, (Rajasthan)
Land Area : 8000 SQMT
Type of Work : Slip Cluches & Air Conditioner For Bus & Trucks
Project Cost : 10.60 Cr.
Contact Person : Mr. Prem Sharma Ji
Status : Completed

Project: TRANS ACNR SOLUTION PVT. LTD. UNIT -2

Location : Shahjanpur, (Rajasthan)
Land Area : 7000 SQMT
Type of Work : PSP Units For Air Conditioner (Sheet Shades)
Project Cost : 9.50 Cr.
Contact Person : Mr. Prem Sharma Ji
Status : Completed

Project: TRANS ACNR SOLUTION PVT. LTD. UNIT -3

Location : Ghiloth, (Rajasthan)
Land Area : 13700 SQMT
Type of Work : A/C Heat Exchanger
Project Cost : 11.30 Cr.
Contact Person : Mr. Prem Sharma Ji
Status : Completed

Project: TRANS ACNR SOLUTION PVT. LTD. UNIT -4

Location : Ghiloth, (Rajasthan)
Land Area : 42000 SQMT
Type of Work : A/C Heat Exchanger
Project Cost : 19.45 Cr.
Contact Person : Mr. Prem Sharma Ji
Status : Completed

Project: SHREE NATH LIFE SCIENCE PVT. LTD

Location : Keshwana, (Rajasthan)
Land Area : 11250 SQMT
Type of Work : Chemicals
Project Cost : 6.25 Cr.
Contact Person : Mr. Y. P. Singh Ji
Status : Completed

Project: HELIOUS SPECILIATY GASES PVT. LTD

Location : Ghiloth, (Rajasthan)
Land Area : 20000 SQMT
Type of Work : Gases
Project Cost : 11.30 Cr
Contact Person : Mr. Ajay Chawla Ji
Status : Completed

Project: NEW ERA MILK FOODS INDIA PVT. LTD.

Location : Bhognipur, Kanpur (U.P.)
Land Area : 90000 SQMT
Type of Work : Milk dairy
Project Cost : 16.40 Cr
Contact Person : Mr. Sachin Chauhan Ji
Status : Completed

Project: PEE AAR AUTOMOTIVE TECHNOLOGIES PVT. LTD.

Location : Ghiloth, (Rajasthan)
Land Area : 9100 SQMT
Type of Work : Mfg. Plastic Injection
Moulding Parts And Assembly
Project Cost : 9.50 Cr
Contact Person : Mr. Sanjeev Dhawan Ji
Status : Completed

Project: KRN HEAT EXCHANGER PVT. LTD.

Location : Neemrana (Rajasthan)
Land Area : 4000 SQMT
Type of Work : A/C Heat Exchanger
Project Cost : 3.20 Cr.
Contact Person : Mr. Bastiram yadav ji
Status : Completed

Project: NORTON CHEMICALS & SPECIALTIES PVT. LTD.

Location : Kaladwas, Udaipur (RJ)
Land Area : 5500 SQMT
Type of Work : Chamilicals
Project Cost : 8.00 Cr.
Contact Person : Mr. Sachin Chavan Ji
Status : Completed

Project: UNICARE FIRE SAFETY INDIA PVT. LTD.

Location : Ghiloth, (Rajasthan)
Land Area : 11800 SQMT
Type of Work : Safety Equipments
Project Cost : 4.65 Cr.
Contact Person : Mr. Sumeet Suri Ji
Status : Completed

**Project: Dr. SALAUDDIN CHOPDAR FOUNDATION
(Multispeciality Charitabl Hospital)**

Location : Jhunjhunu (Rajasthan)
Land Area : 80000 SQMT
Type of Work : Hospital
Project Cost : 45.00 Cr.
Contact Person : Mr. Mehboob Diwan
Status : Completed

2023-24

FEW MAJOR COMPLETED PROJECTS OLD

Project: LAVISH SURFACES PVT. LTD.

Location : Ghiloth, (Rajasthan)
Land Area : 40000 SQMT
Type of Work : Ceramics
Project Cost : 24.34 Cr.
Contact Person : Mr. Ramavtar Yadav ji
Status : Completed

Project: SEMICON SPECIALITY GASES PVT. LTD.

Location : Ghiloth, (Rajasthan)
Land Area : 20000 SQMT
Type of Work : Gases
Project Cost : 8.34 Cr.
Contact Person : Mr. Manish Bhatnagar ji
Status : Completed

Project: KRITIKA ENTERPRISE PVT. LTD.

Location : Kolila, Neemrana, (RJ)
Land Area : 14000 SQMT
Type of Work : A/C Heat Exchanger
Project Cost : 94 Lacs
Contact Person : Mr. Mandeep Yadav ji
Status : Completed

Project: STAR CRYOGENICS PRIVATE LIMITED

Location : Kotkasim, Alwar (RJ)
Land Area : 19000 SQMT
Type of Work : Nitrogen, OrgN, Hydrogen, Oxygen gas
Project Cost : 8 Cr.
Contact Person : Mr. Deepak Dua ji
Status : Completed

Project: Maruti Weld Pvt. Ltd.

Location : Kehrani, Bhiwadi (RJ)
Status : COMPLETED

Project: VIJAY HOTELS

Location : Shahjahanpur (Rajasthan)
Status : COMPLETED

Project Name: Pro Tech Telilinks Pvt. Ltd.

Location : Faridabad (Haryana)
Status : COMPLETED

Project: Bhandari Oil Mill Pvt. Ltd.

Location : Bhiwadi (Rajasthan)
Status : COMPLETED

Project: Shikha Packagings (I) Pvt. Ltd.

Location : Neemrana (Rajasthan)
Status : COMPLETED

Project: Bharti Airtel Ltd.

Location : (Rajasthan)-Bonar, Bilada, Bisalpur,
Kaprada, Rupalgarh, Suket
Status : COMPLETED

Project: D.S.R. Tor Steel Ltd.

Location : Bhiwadi (Rajasthan)
Status : COMPLETED

Project: Ashiana Ispat Pvt. Ltd.

Location : Bhiwadi (Rajasthan)
Status : COMPLETED

Project: Surya Irrigation Pvt. Ltd.

Location : Bhiwadi (Rajasthan)
Status : COMPLETED

Project: Ashoka Liquors (P) Ltd.

Location : Gurgaon (Haryana)
Status : COMPLETED

Project: BSNL (KERLA)

Location : Mahilakad, Roadvila, Pullychera,
Natwartur
Status : COMPLETED

Project: Erricsson (India) Pvt. Ltd.

Location : Jaipur, (Rajasthan)
Status : COMPLETED

FEW MAJOR COMPELETED PROJECTS

Project: Jurasan Oriental Structural Engineers Pvt. Ltd.

Location : Gurgaon (Haryana)
Status : COMPLETED

Project: Phoenix ARC Pvt. Ltd.

Location : Shahjahanpur, (Rajasthan)
Status : COMPLETED

Project: Gargi Bio Tek Pvt. Ltd.

Location : Pune (Maharashtra)
Status : COMPLETED

Project: Virya Seth Pvt. Ltd.

Location : Gurgaon (Haryana)
Status : COMPLETED

Project: Oriental Structural Engineers Pvt. Ltd.

Location : Gurgaon (Haryana)
Status : COMPLETED

Project: SAI MAHIMA HOTEL

Location : Shahjahanpur, (Rajasthan)
Status : COMPLETED



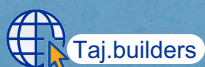


OFFICE

TC- 437, 438, 439 & 440, 4th Floor Capital Highstreet, Phoolbagh Chowk
Bhiwadi - 301019 Rajasthan, India

 (+91) 01493-45108296, 9694998888

 Info@taj.builders,
Sales@taj.builders



2025-26